



The flameproof ZT-BC150 beacon is ATEX / IECEx Certified for use in potentially explosive atmospheres, helping to signal alarms, alerting personnel to potential dangers, or signal the need for immediate action in emergency situations. The BC150 can also be used as part of a status light array.

ATEX / IECEx Flameproof Certification: ATEX Zone 1 and Zone 2 Certified for gas / vapour and Zone 21 and Zone 22 compliant for dust / powder applications.

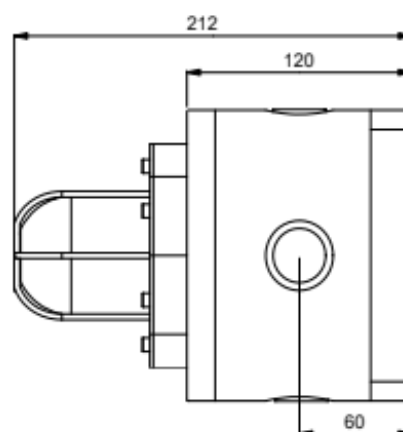
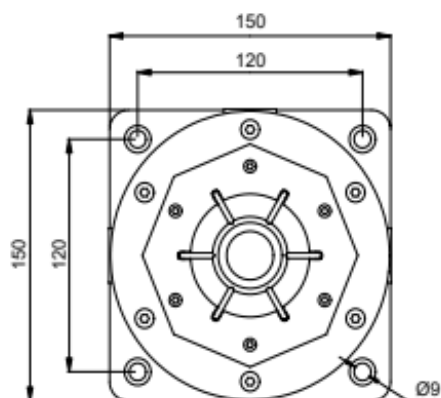
Application: Oil and gas, chemical, petrochemical, pharmaceutical, marine and offshore applications

Key features: Robust and highly reliable, this Ex beacon is designed for corrosive environments and hazardous areas. Housing is moulded Glass-Reinforced Polyester (GRP), protected by an UV resistant paint. The lens is made of borosilicate glass and is available with a 316L stainless steel lens guard option.

Options: This beacon can be delivered with two different light sources:

- LED with steady, rotary or flashing options of different intensity.
- Flashing with XENON tube of different intensity.
- Four flashing frequencies are selectable.

A range of accessories is available to customise this product. These include pipe mounting brackets, sunshades, tag and duty labels and other accessories



Explosion Proof Beacon Range

ZT-BC150 Ex Beacon / Light



MATERIAL	• Enclosure: Glass-Reinforced Polyester (GRP)		• Lens: Tempered borosilicate glass 3.3			
HOUSING COLOUR	• RED : RAL3001/3028 • BLACK : RAL9005 • ORANGE : RAL2010		• YELLOW : RAL1018 • GREEN : RAL6032		• BLUE : RAL5005 • GREY : RAL7038	
INGRESS PROTECTION	• IP66/67					
AMBIENT TEMPERATURE FOR OPERATION	• T6 = - 40°C ~ + 55°C , T5 = - 40°C ~ + 60°C, T4 = - 40°C ~ + 70°C					
CERTIFICATION	• Presafe 16 ATEX 8967X, IECEx PRE 16.0087X					
EX CODE	<div><div><div><div><div><div></div></div></div><div><div><div></div></div></div></div><div><div><div></div></div></div></div><div>Ex</div></div> <div>• II 2 GD Ex db IIC T4 ~ T6 Gb • Ex tb IIIC T135°C ~T85°C Db</div>					
STANDARD	• EN / IEC 60079-0, EN / IEC 60079-1, EN / IEC 60079-31					
ATEX AREA ZONE	• Gas zone: 1 & 2 Dust zone: 21 & 22					
CANDELA LENS COLOUR	• Red: 0.15 • Amber: 0.51 • Blue: 0.12 • Green: 0.49 • Yellow: 0.85 • Clear: 1					
LIGHT TYPE	Flash tube (XENON)			LED		
TRUE LIGHT INTENSITY	• 5 joules = 109 Cd • 15 joules = 395 Cd			• 10 joules = 293 Cd • 21 joules = 424 Cd		
PEAK LIGHT INTENSITY	• 5 joules = 35970 Cd • 15 joules = 83345 Cd			• 10 joules = 66804 Cd • 21 joules = 95824 Cd		
LIFETIME	• Emissions are reduced to 70% after 8 million flashes			• >50 000 hours without luminosity decreasing		
BLINKING OR ROTARY FREQUENCY (0 = steady status)	• 60/80/120 times/min • 100/120/150 times/min • 120/150/180 times/min			• 60/75/0 times/min • 60/75/100 times/min • 75/95/0 times/min • 75/95/120 times/min		
CONSUMPTION	• 5 joules = 10W • 15 joules = 20W			• 10 joules = 15W • 21 joules = 25W		
AMBIENT HUMIDITY*	• Up to 95%*					
POWER SUPPLY	• 12-48V DC • 100-240V AC (50/60hz)					
RATED IMPULSE WITHSTAND VOLTAGE	• 1kV following IEC 61000-4-5					
WORKING CURRENT LED	• Power	12V DC	24V DC	48V DC	110V AC	220V AC
	• 5W	530 mA	260 mA	120 mA	80 mA	40 mA
	• 10W	1100 mA	530 mA	240 mA	160 mA	80 mA
WORKING CURRENT XENON	• Energy	12V DC	24V DC	48V DC	110V AC	220V AC
	• 5J	460 mA	280 mA	140 mA	60 mA	35 mA
	• 10J	850 mA	490 mA	250 mA	100 mA	60 mA
	• 15J	1200 mA	700 mA	360 mA	140 mA	80 mA
	• 21J	NA	960 mA	480 mA	180 mA	110 mA
CABLES ENTRY	• 4 x M20, 1 x M25 & 3 x M20, 1 x 1/2" NPT & 3 x M20, 1 x 3/4" NPT & 3 x M20. Additional adaptors can be supplied as well as cable glands, please specify.					
TERMINAL	• From 22 to 14 AWG - from 0.50 mm² to 2.5 mm²					
NET WEIGHT	• 3.6 Kg					

Explosion Proof Beacon Range

ZT-BC150 Ex Beacon / Light



Prefix - **ZT** -

Products	Certification	Lens Colour	Light Type & Supply	Duty Label	Tag Label	Lens Guard	Connection	Housing Colour	Standard
BC	150	R	X05 DC	N	N	N	A	RD	N

Standard Product

BC ~ BEACON

150 ~ HAZARDOUS AREA

R ~ RED

Y ~ YELLOW

B ~ BLUE

G ~ GREEN

A ~ AMBER

C ~ CLEAR

X05 DC ~ XENON 5J & DC Supply

L05 DC ~ LED 5W & DC Supply

X10 DC ~ XENON 10J & DC Supply

L10 DC ~ LED 10W & DC Supply

X15 DC ~ XENON 15J & DC Supply

X21 DC ~ XENON 21J & DC Supply

X05 AC ~ XENON 5J & AC Supply

L05 AC ~ LED 5W & AC Supply

X10 AC ~ XENON 10J & AC Supply

L10 AC ~ LED 10W & AC Supply

X15 AC ~ XENON 15J & AC Supply

X21 AC ~ XENON 21J & AC Supply

N ~ 2 x M20 x 1.6

RD ~ RED

YW ~ YELLOW

BU ~ BLUE

BL ~ BLACK

GN ~ GREEN

GY ~ GREY

OJ ~ ORANGE

O ~ OTHER

A ~ 2 x M20 x 1.6

B ~ 2 x M25 x 1.5 (via Adaptor)

C ~ 2 x 1/2" NPT (via Adaptor)

D ~ 2 x 3/4" NPT (via Adaptor)

Y ~ YES

N ~ NO

Y ~ YES

N ~ NO

Y ~ YES

N ~ NO

CONDUIT ACCESSORIES

M20 316L St. St Exd conduit plug	SPARE3060009
St. St Exd cable gland 10-16mm	SPARE3060109
1/2" NPT St. St. conduit adaptor	SPARE3060106
St. St Exd cable gland 7-12mm	SPARE3060108
M25 St. St. conduit adaptor	SPARE3060105
3/4" NPT St. St. conduit adaptor	SPARE3060107

CONDUIT ACCESSORIES

M20 NPB Exd conduit plug	SPARE3060008
NPB Exd cable gland 10-16mm	SPARE3060018
1/2" NPT NPB conduit adaptor	SPARE3060019
NPB Exd cable gland 7-12mm	SPARE3060108
M25 NPB conduit adaptor	SPARE3060105
3/4" NPT NPB conduit adaptor	SPARE3060002

Meaning of lens colour usage in the international standard (IEC 60073)

Colour	Meaning	Action	Example
RED	EMERGENT	Dangerous state. Take immediate action.	Pressure/Temperature beyond the safe state - Shutdown due to the action of protective devices - Fire alarm - Equipment failure alarm
AMBER YELLOW	ABNORMAL	Abnormal state, near the critical status	Pressure/Temperature above the normal range - Protective device released - Toxic and harmful gases release alarm
GREEN	SAFE	Normal state	Pressure/Temperature in normal state - Automatic control system is operating normally
BLUE	MANDATORY	Requires operator's action	Emergency evacuation - Abandon rescue and escape - Abandon platform or abandon ship - Enter the command
CLEAR	NO SPECIAL SIGNIFICANCE	If uncertainty for other colors, clear is allowed to be used	General information - Can't exactly use red, yellow, green or blue - Used for the implementation of command - Indicate the measured values