

TCP/IP Module with Modbus (SCM-LAN)



Description

The SCM-LAN is a TCP/IP module that is designed to be DIN mounted inside of a Smart Connect Multi-loop control panel. It's powered and is interfaced to the panel via a RJ45 connection. The module provides a Smart Connect Multi-loop CIE with a TCP/IP connection that allows the panel to report events to an external monitoring system, such as Datalog or Zeta Remote.

Modbus:

The Smart Connect Multiloop LAN Module has a built in Modbus output. The Output allows a Modbus master to read the panel status with a Modbus 0x04 command. The data which can be read consists of:-

- General status
- Expansion modules connected
- Zone Status
- Loop Status
- Local I/O status

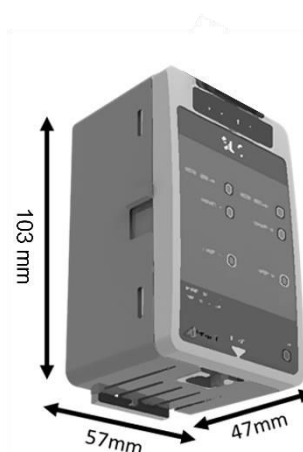
Technical Specifications

Specification	SCM-LAN
Design Standard	EN54
Approval	EN54 (Pending)
Quiescent current	46.5mA
Alarm current	46.5
Connection	RJ45
Connector Type	CAT 5 Minimum
Operating Temperature	-5°C (23°F) to 40°C (104°F)
Maximum Humidity	93% non-condensing
Size (mm) (HxWxD)	103mm x 97mm x 46mm
Weight	0.2kg

Features

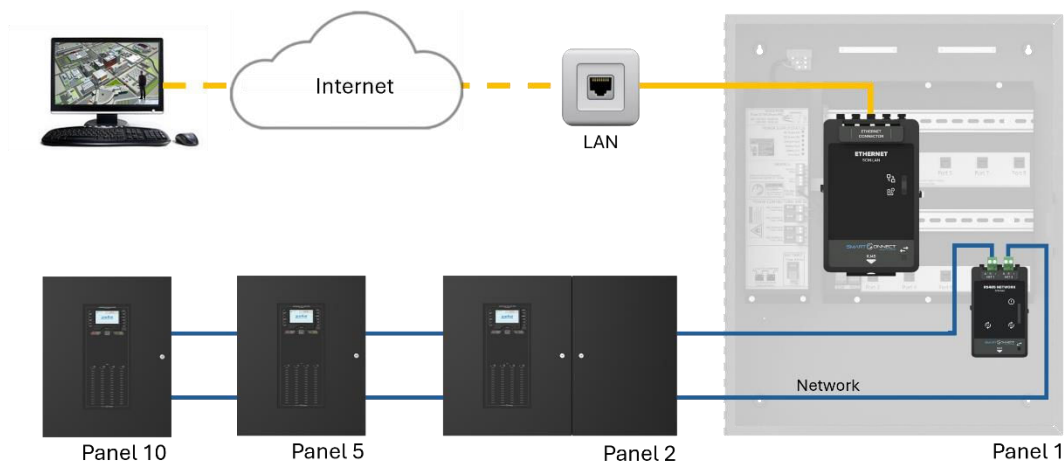
- Designed to EN54 requirements
- TCP-IP output via RJ45
- Zeta Remote monitoring via a desktop PC or Smartphone via the cloud
- Remote control via the cloud
- Extensive front unit indications
- Quick and easy to install
- Extensive front unit status indications
- Responsive web interface

Dimensions

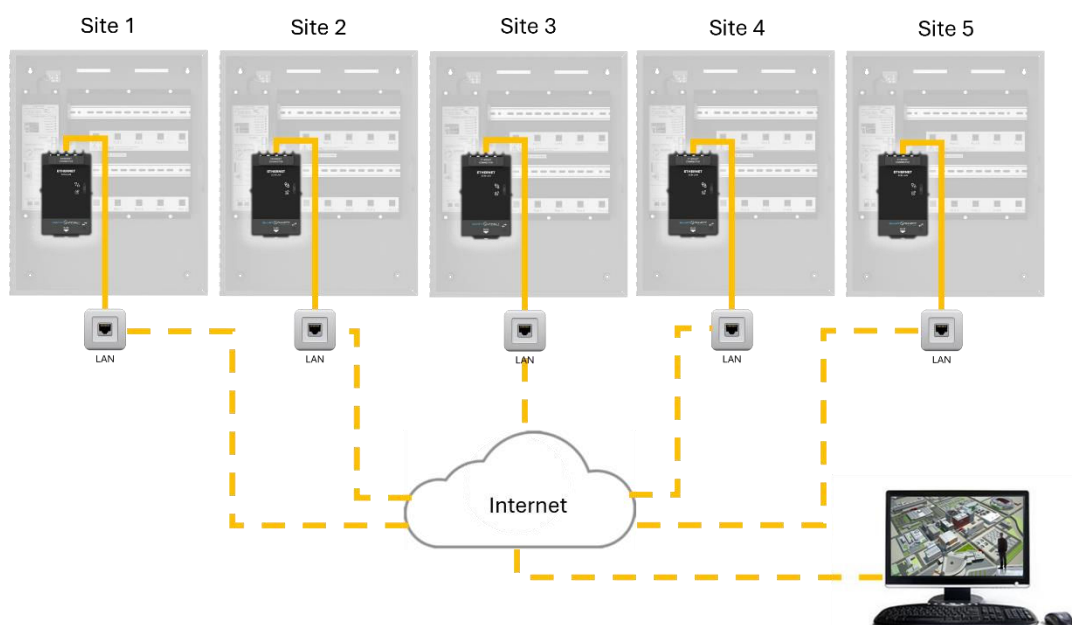


RS485 Network - Typical System Wiring Diagram

Example: TCP/IP Connection for 1-10 panels hard wired with RS485 network for graphics system



Example: Modbus Connection for 1-5 single panel sites for graphics system



Example: Modbus Connection for 1-10 panels on a hard wired RS485 network for graphics system

