

Weatherproof Series, Fire Alarm Bell, Type B 150mm (6 inch) and 200mm (8 inch)



INSTALLATION INSTRUCTIONS

Please ensure that the following instructions are read carefully prior to installation.

1. Bells should be positioned a minimum of 2.4m above the floor, in the vertical plane.
2. Remove gong by unscrewing allen/hex bolt.
3. Ensure that the terminals are at the top left side of the unit; feed field wiring through the base. For outdoor use the base should be mounted on the enclosed back box. One 20mm threaded cable entry is available. (Fig 2/3)
4. Connect wiring (max 2.5mm²) to terminals (Fig 1) observing polarity. Dress wires to avoid touching the gong.
5. Correctly align gong on base and replace allen/hex bolt to secure.

Fig 2: Surface Installation

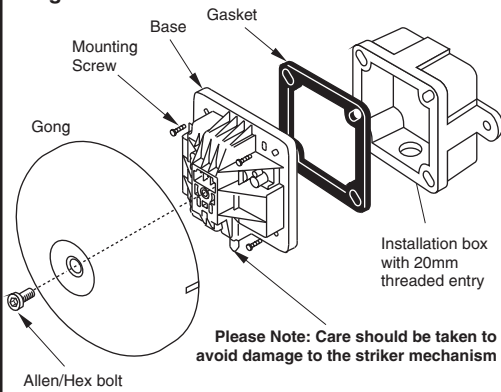


Fig 1: Wiring (rear view) Observe Polarity

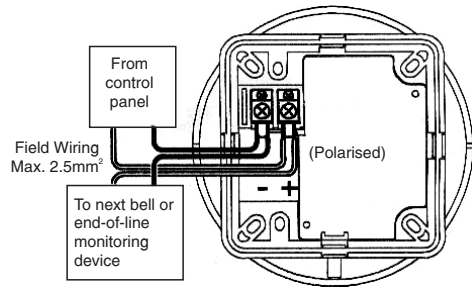
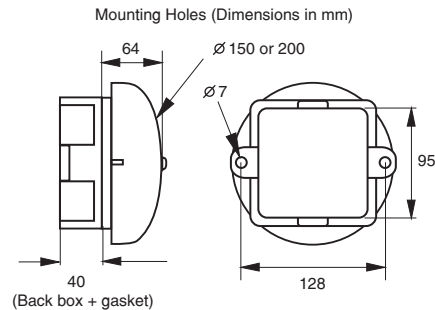


Fig 3: Basic Mechanism and Gongs



Mounting holes are located on the bell base to suit installation back box supplied.

SPECIFICATION

Model	ZTB6B/WP	ZTB8B/WP
Rated Voltage +/-15%	24Vdc	24Vdc
Rated Current at 24Vdc	12mA	25mA
Operating Temperature	-10 to +50°C	-10 to +50°C
IP Rating (minimum)	33C	33C
Weight	780g	1100g
Body Colour	Red	Red

Note: For sound output data refer to Sound Output Data Sheet DS/BELLDATA/ZETA/ISS1

Fire Alarm Bells manufactured for ZETA Alarms Ltd. UK

Weatherproof Series, Fire Alarm Bell, Type B 150mm (6 inch) and 200mm (8 inch)



INSTALLATION INSTRUCTIONS

Please ensure that the following instructions are read carefully prior to installation.

1. Bells should be positioned a minimum of 2.4m above the floor, in the vertical plane.
2. Remove gong by unscrewing allen/hex bolt.
3. Ensure that the terminals are at the top left side of the unit; feed field wiring through the base. For outdoor use the base should be mounted on the enclosed back box. One 20mm threaded cable entry is available. (Fig 2/3)
4. Connect wiring (max 2.5mm²) to terminals (Fig 1) observing polarity. Dress wires to avoid touching the gong.
5. Correctly align gong on base and replace allen/hex bolt to secure.

Fig 2: Surface Installation

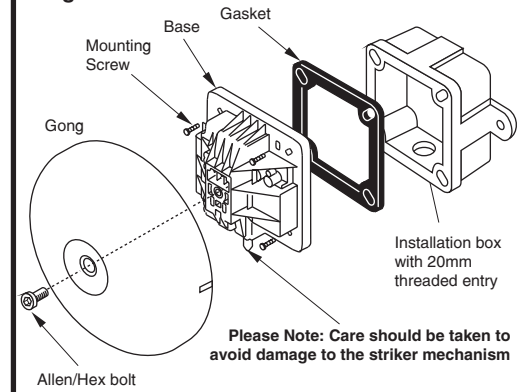


Fig 1: Wiring (rear view) Observe Polarity

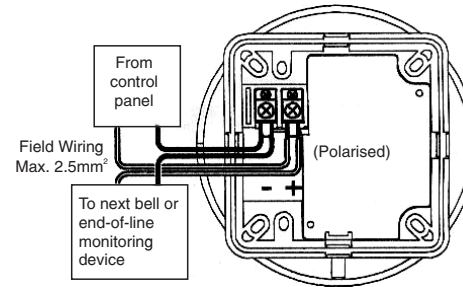
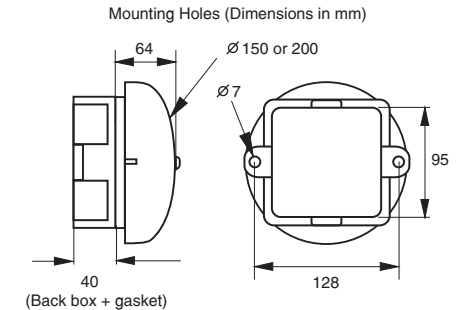


Fig 3: Basic Mechanism and Gongs



Mounting holes are located on the bell base to suit installation back box supplied.

SPECIFICATION

Model	ZTB6B/WP	ZTB8B/WP
Rated Voltage +/-15%	24Vdc	24Vdc
Rated Current at 24Vdc	12mA	25mA
Operating Temperature	-10 to +50°C	-10 to +50°C
IP Rating (minimum)	33C	33C
Weight	780g	1100g
Body Colour	Red	Red

Note: For sound output data refer to Sound Output Data Sheet DS/BELLDATA/ZETA/ISS1

Fire Alarm Bells manufactured for ZETA Alarms Ltd. UK