

Addressable Remote Indicator LED

(ZTA-LE2, ZTA-LE2/10 & ZTA-LE3)



ZTA-LE2 & ZTA-LE2/10

The ZTA-LE2 remote LED indicator has been designed so that it is loop powered and can be installed anywhere on the loop (it can either be connected as part of the loop, or as a spur from the detector it is indicating). This minimises the amount of wiring from a detector to its remote indicator.

It has the same address as the detector it is indicating and will light whenever the panel tells the detector to do so.

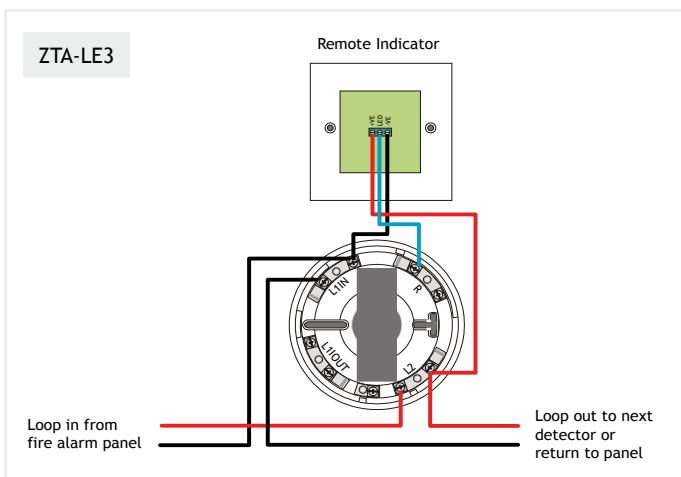
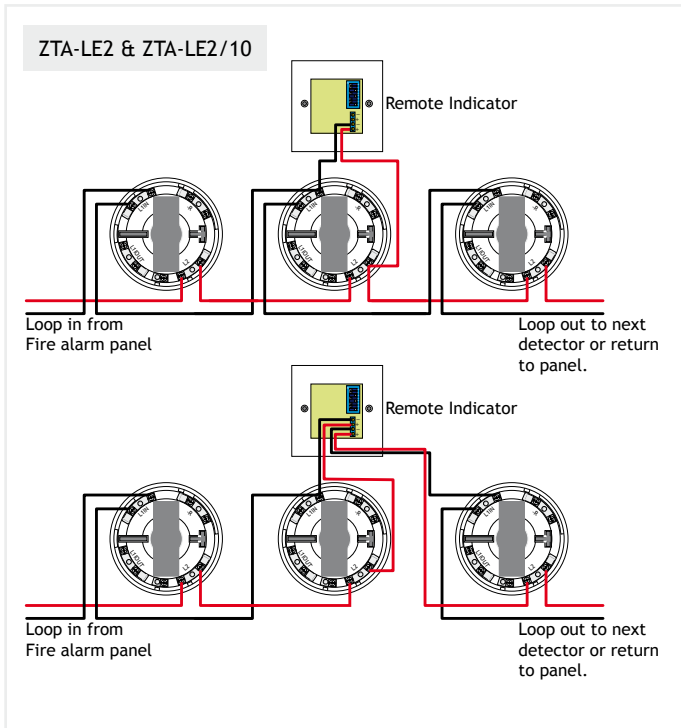
There is also a version that will listen to a number of consecutive addresses, designed for when there are more than one detector out of sight.

ZTA-LE3

The ZTA-LE3 is a low cost alternative to the fully addressable remote LED indicator ZTA-LE2.

Remote LEDs are used in installations where a detector going into alarm is likely to occur out of sight (for instance behind a locked door or in a ceiling void). The indicator will then show the location of the alarm.

The ZTA-LE3 is designed to work with addressable Fyreye detectors on the Premier AL panel only. They will need to be programmed to operate and can be triggered from either a single detector or a group of detectors.



Model	ZTA/LE2	ZTA/LE2-10	ZTA-LE3
Part No.	48-020	48-020A	48-021
Input Voltage	17 - 33V DC		
Quiescent Current	1.5 mA		0 mA
Alarm Current	10mA		
Addresses Repeated	1	1-10	1
Colour	White Plastic, Red LEDs		
Operation Colour	Red		
Operating Temperature	-0° C to 50° C		
Maximum Humidity	95% RH N/C		
IP Rating	IP 43		
Size (WxHxD mm)	86 x 86 x 23		
Weight	40 g		