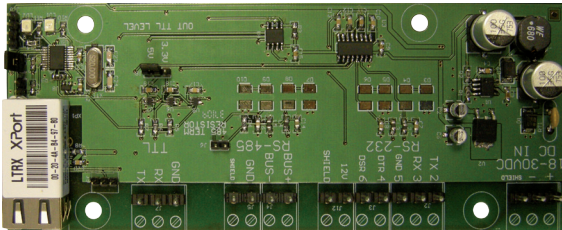


Zeta TCP/IP Communicator

Premier Addressable Repeater Panel (AD-REP)



The Zeta TCP/IP Communicator connects to the serial port of a Simplicity Plus panel (SP-126 or SP-64) to allow the panel to broadcast alarm or fault information to a monitoring PC set on any TCP/IP network.

The Premier addressable repeater Panel is a serial repeater panel for use with the Premier AD and Simplicity Plus analogue addressable fire alarm panels.

It is a display only repeater (no controls) which indicates power, general fault and general fire via LEDs. Information about the device in fault or alarm is displayed on the LCD screen.

It also has an internal buzzer to indicate that it requires attention.

The Simplicity panel can transmit the following information;

- ✓ Device alarm (including loop & address information)
- ✓ Device fault (including loop & address information)
- ✓ Panel reset
- ✓ Loop reconfigured
- ✓ Loop wiring fault
- ✓ Power supply fault
- ✓ Earth fault
- ✓ Clock reset
- ✓ Evacuate started

Using the Zeta Alarm Watch software, multiple panels can be monitored from a central PC. The panels can be grouped by company to give a structured display on the PC.

Future development of this product will see other panels being able to interface with the TCP/IP communicator, starting with the Premier Quatro panel in early 2010.

Compatible Panels

- ✓ NPAD - Premier AD Analogue Addressable Fire Alarm Panel
- ✓ SP-64 - Simplicity Plus Analogue Addressable Fire Alarm Panel
- ✓ SP-126 - Simplicity Plus Analogue Addressable Fire Alarm Panel

Features

- ✓ Addressable repeater panel (display only, no controls)
- ✓ Complies fully to EN54 parts 2 & 4

Model	AD-REP
Part No.	37-156
Supply Voltage	20 - 30 V DC
System Voltage	29V DC (Nominal)
Connections	Supply + , Supply - , Data + , Data -
Operating Temperature	-0° C to 50° C
Enclosure Size	376 x 291 x 70mm
Weight	1 KG