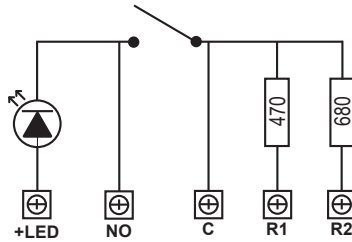


ZT-CP4/WP Conventional Weatherproof Manual Call Point

Connection options



On the back of the call point there are 5 screw terminals connected to the internal PCB. Depending on where the wires are connected, the call point provides a series resistor, activates an internal LED or can simply provide a closing contact. If you choose to connect the +IN cable to the terminal marked +LED the call point, when operated, will switch on the internal red LED. Alternatively if you connect to the NO terminal the LED will not operate.

There are three different options for connecting the -OUT wire. Connecting to the C terminal provides a clean contact without any series resistor(*). Choosing either the R1 or R2 terminals incorporates a series resistance, where R1 is a 470 Ω (5% - 2 W) and R2 is a 680 Ω (5% - 2 W). The table below confirms the different connection options:

	+LED	NO	C	R1	R2
SWITCH		+IN	-OUT		
LED+SWITCH (*)	+IN		-OUT		
LED+SWITCH+R1	+IN			-OUT	
SWITCH+R2		+IN			-OUT
SWITCH+R1		+IN		-OUT	
LED+SWITCH+R2	+IN				-OUT

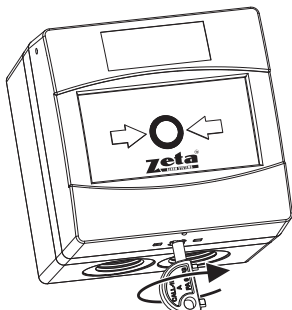
(*) the current must be limited to 20 mA to avoid LED damages.

Important note: Please note that incorrectly connecting the power supply directly between the “+LED” and “NO” terminals can damage internal components, as the power supply will be directly applied to the LED. Carefully check your connections before applying power.

Mounting

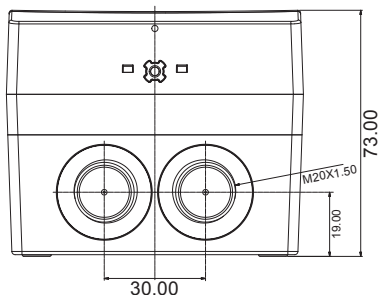
- 1 Mount the back box to a suitably flat surface using the screws provided in the installation pack. The cable entry holes should be in the vertical plane. The back box can be mounted with either the single or the double entry holes at the top. To maintain IP rating it is recommended that entry to the back box is done from below, using the one or two 20mm conduit entry holes (knockouts) as required. Use IP rated cable glands (not supplied).
- 2 When the wiring connections are complete, orient the terminal chassis onto the back box ensuring that the two hinge tabs are at the top and firmly secure the terminal chassis onto the back box using the 4 screws provided.
- 3 Carefully attach the front part to the top of the terminal chassis starting from the top hinges.

Reset Instructions

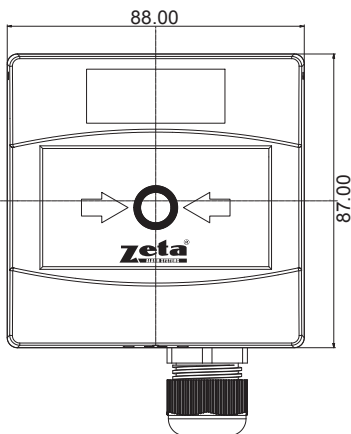
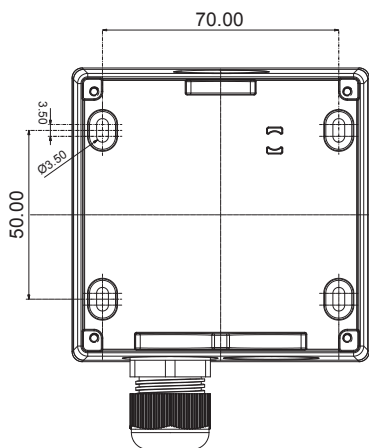


Turn clockwise to reset

Dimensions



Mounting dimensions



Technical Specifications

Maximum Voltage	30 Volt
Minimum Voltage*	5,0 Volt if LED with R1 is chosen 6,0 Volt if LED with R2 is chosen
Current Rating (non-operated)	0 mA
Current Rating (operated)	19 mA @12 Volt - R1
	13 mA @12 Volt - R2
	45 mA @24 Volt - R1
	31 mA @24 Volt - R2
Cable Termination	0,5 - 2,5 mm ²
Cable Gland	M20 (6-12mm cable) IP67/IP68
Operating Temperature	-30 / +70 °C
Humidity	0 - 95 %
IP rating	67
Material	ABS/Polycarbonate/PA6+glass fiber

*Below minimum voltage LED current is lower than 5 mA



zeta[®]
TELEPHONE
 Zeta Alarms Limited

Detection House, 72-78 Merle Road Swanscoe, SA1 2EN
 Telephone: +44 (0)1792 455 175
 Email: info@zetaalarm.com

21
 2831-CPR-F4661
 21
 0832-UKCA-CPR-F1086

EN 54-11:2001+ A1:2005
 Conventional Type A
 Outdoor Manual Call Point

Zeta CP4/WP
 Conventional Weatherproof
 Manual Call Point
 Red series only